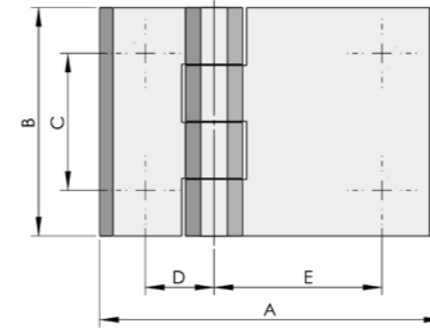
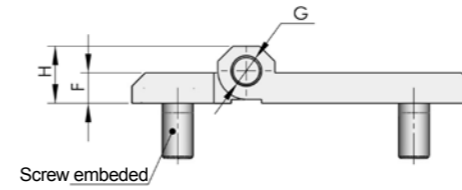
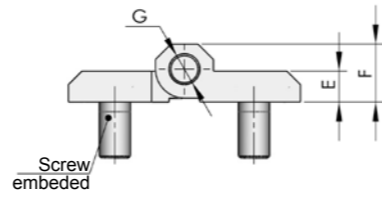
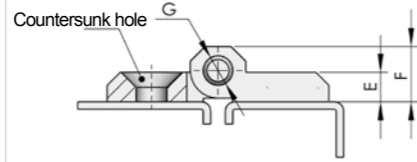


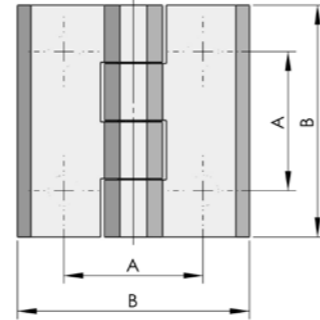
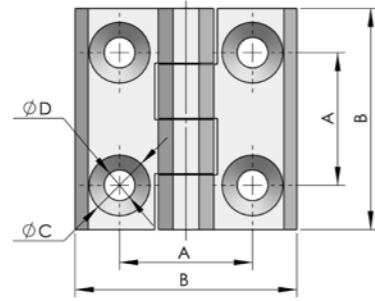
CL226



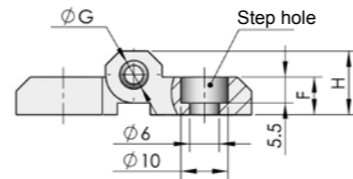
CL226-1



CL226-2



CL226-3



CL226-2A



**Main material and finish:** Black powder coated ZDC hinge, nickel-plated steel pin  
**Application:** Opening angle 180°

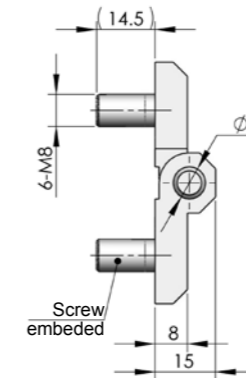
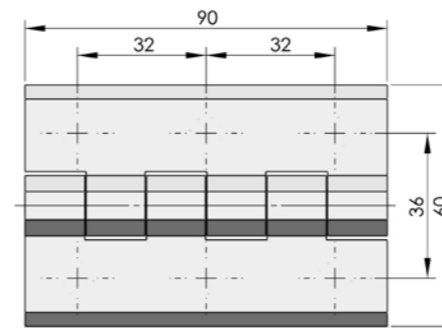
ERP	Specification							Remarks
	A	B	C	D	E	F	G	
CL226Z1A001	36	60	16.5	8.4	8	15	8	Countersunk hole, ZDC
CL226Z1A006	36	60	16.5	8.4	8	15	8	Screw embedded, ZDC
CL226S9C001	36	60	16.5	8.4	8	15	8	Countersunk hole, stainless steel
CL226Z1A009	30	50	12.5	6.3	6	11.5	6	Countersunk hole, ZDC
CL226Z1A010	30	50	Refer to detailed drawing		6	11.5	6	Screw embedded, ZDC
CL226Z1A011	30	50	Refer to detailed drawing		6	11.5	6	Step hole, ZDC
CL226N00001	30	50	12.5	6.3	6	11.5	6	Countersunk hole, PA
CL226S4B001	30	50	12.5	6.3	6	11.5	6	Countersunk hole, stainless steel
CL226Z1A015	25	40	10.2	5.3	5	9	4	Countersunk hole, ZDC
CL226Z1A017	25	40	10.2	5.3	5	9	4	Screw embedded, ZDC

CL226-4A



**Main material and finish:** Black powder coated ZDC hinge, nickel-plated steel shaft  
**Application:** Opening degree 180°

ERP	Specification								Remarks
	A	B	C	D	E	F	G	H	
CL226Z1A019	90	60	36	18	44	8	8	15	Ø8.4 Countersunk hole, ZDC
CL226Z1A020	90	60	36	18	44	8	8	15	M8 Screw embedded, ZDC
CL226Z1A021	63	50	30	15	28	6	6	11.5	Ø6.3 Countersunk hole, stainless steel
CL226Z1A022	63	50	30	15	28	6	6	11.5	M6 Screw embedded, ZDC



	LH	RH
ERP	CL226Z1A024	CL226Z1A025

CL226-5A



**Main material and finish:** Black powder coated ZDC hinge, nickel-plated steel pin  
**Application:** Opening angle 180°